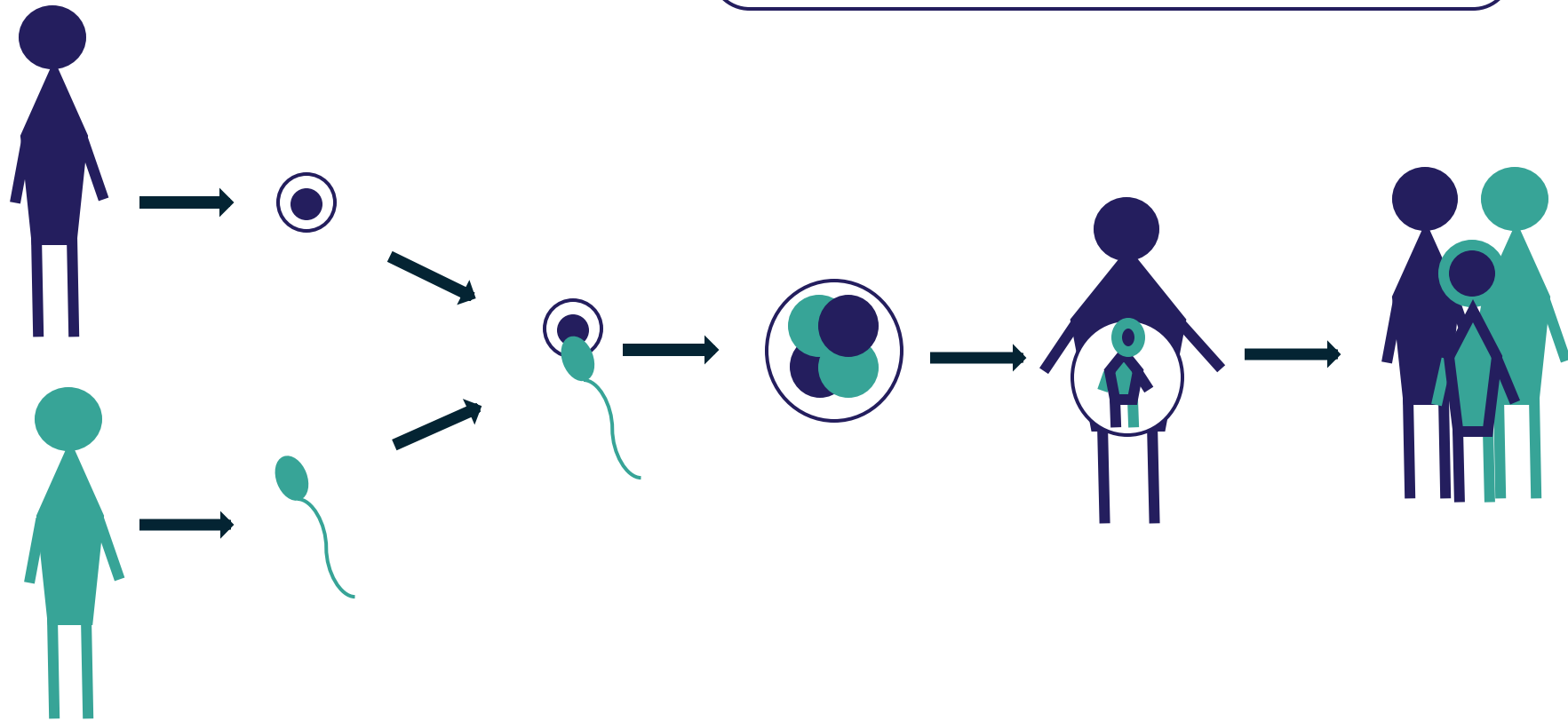
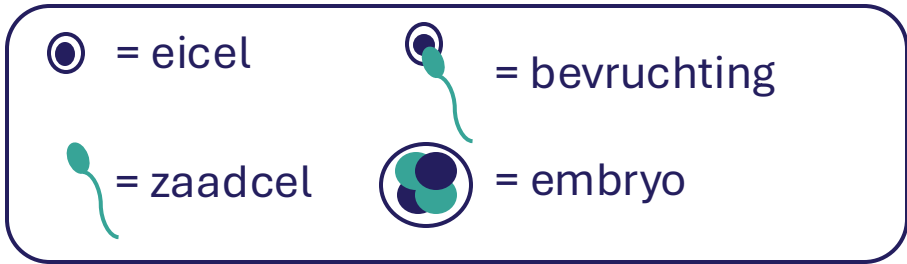
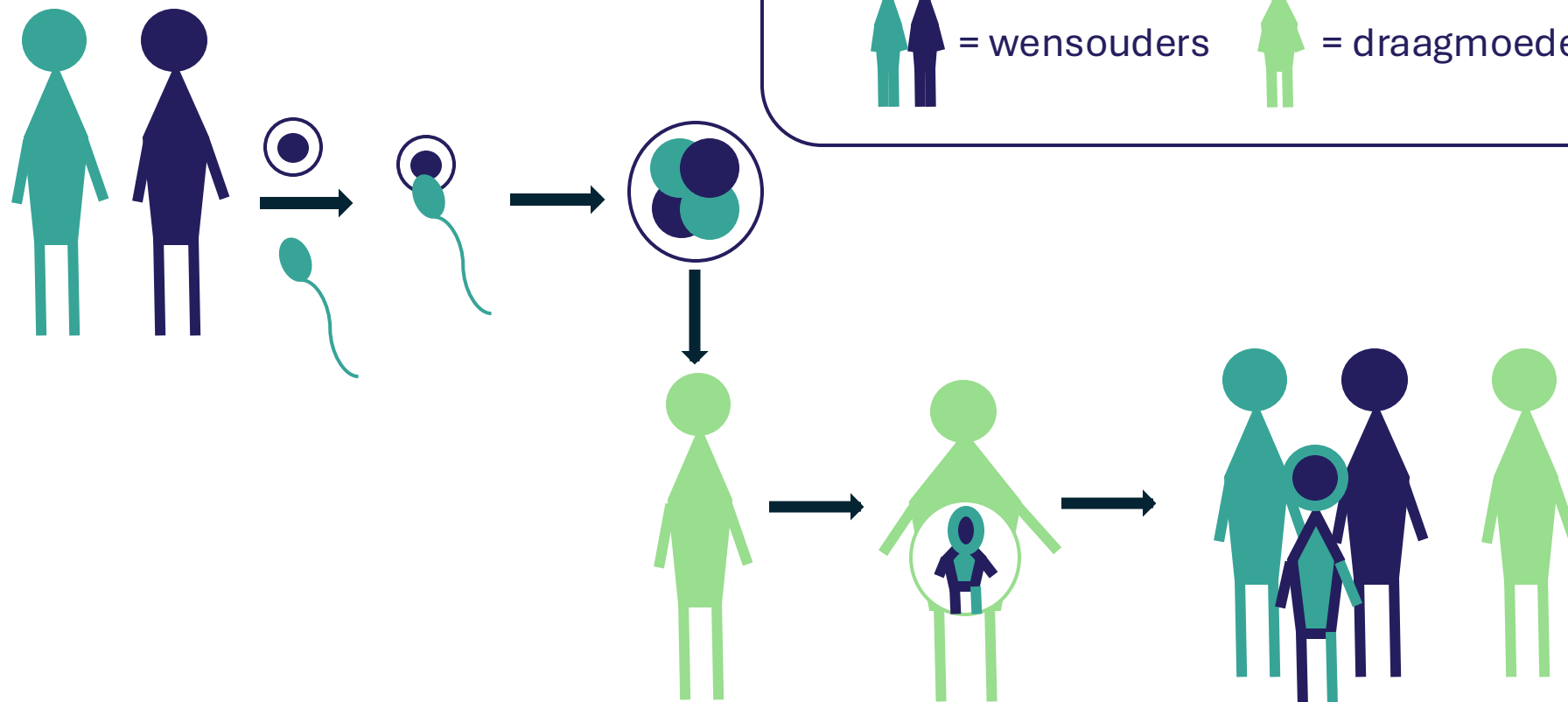


Genetische band



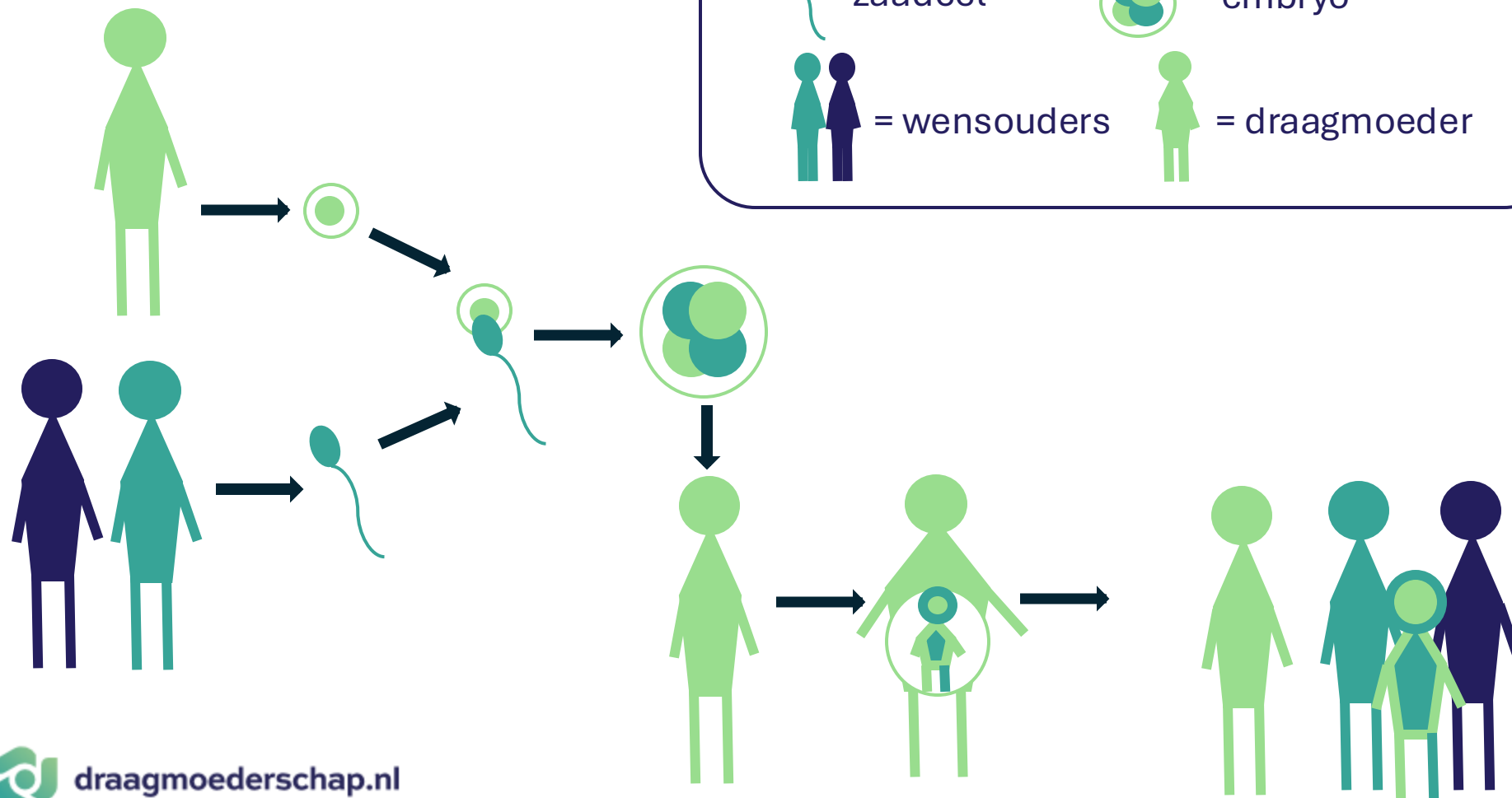
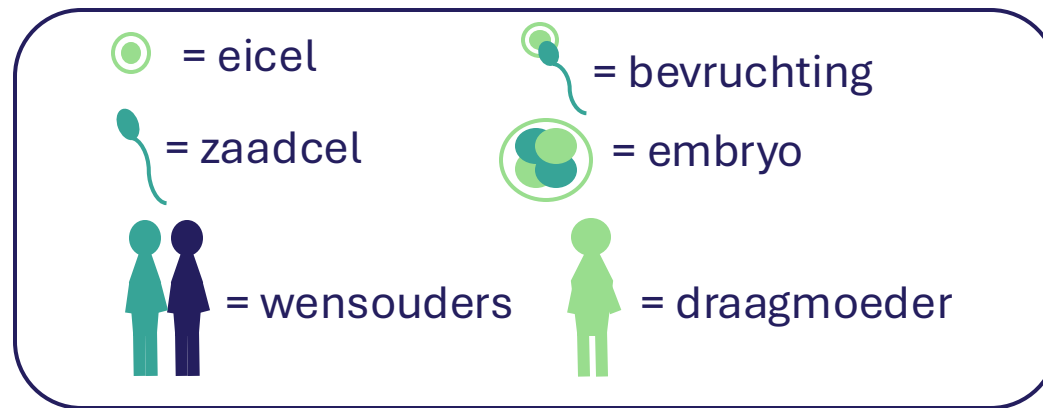
Draagmoeder is zwanger van eicel en zaadcel van wensmoeder en wensvader



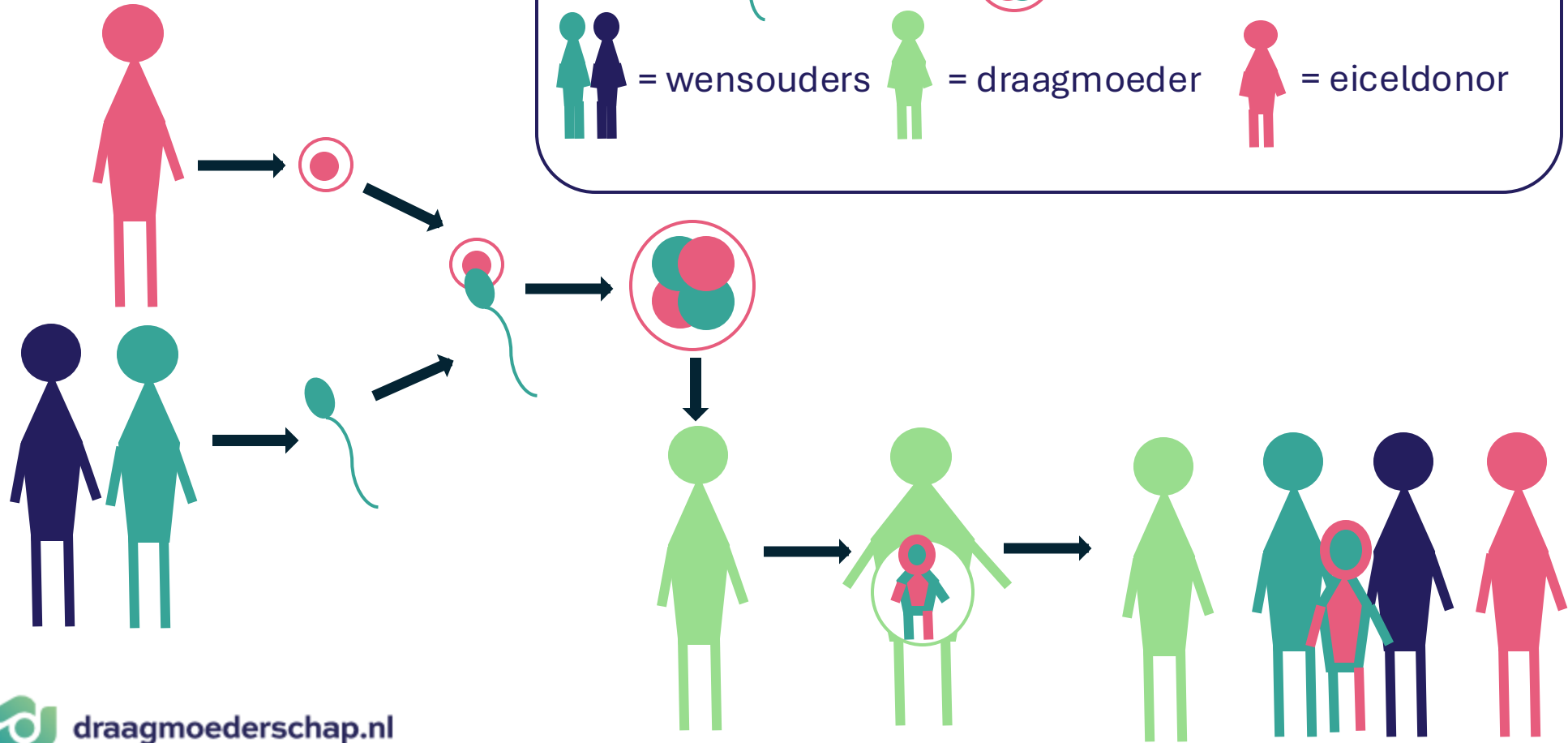
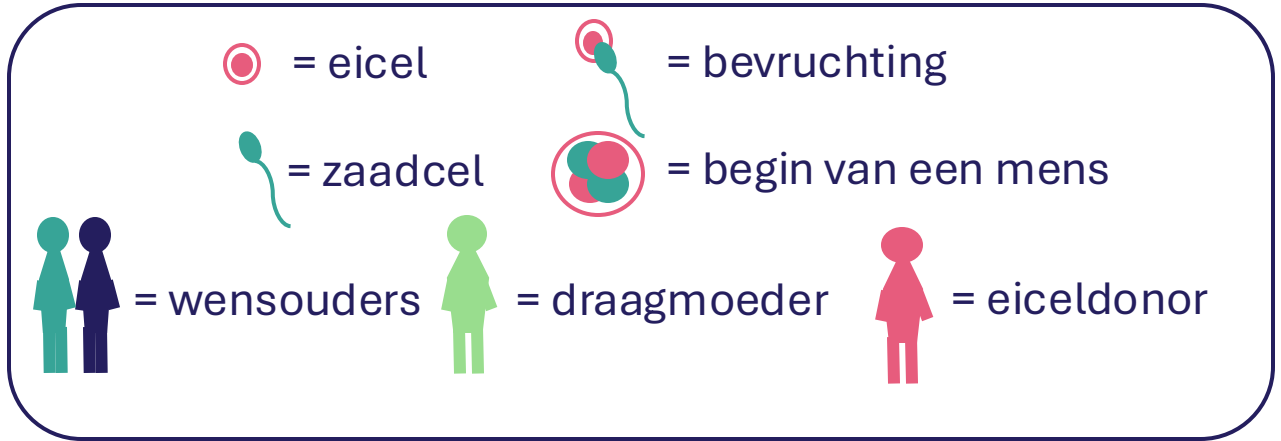
Legend for the diagram:

- = eicel
- = zaadcel
- ⊙ = bevruchting
- ⊙ (with 3 dots) = embryo
- ♀♂ = wensouders
- ♀ = draagmoeder

Draagmoeder is zwanger van
eigen eicel en zaadcel van wensvader



Draagmoeder is zwanger van eicel van eiceldonor en zaadcel van wensvader



Draagmoeder is zwanger van eicel van wensmoeder en zaadcel van zaaddonor

